

# Alltech® SelectPRO™ Column Selector

- Streamline method development and validation
- Screen multiple HPLC columns quickly and automatically
- Eliminate sample carry-over and minimize dispersion with low dead-volume valve architecture

The Alltech® SelectPRO™ Column Selector is a self-contained, electrically operated instrument for automated column selection. A SelectPRO™ Column Selector is a powerful tool for quickly screening multiple columns for the best separation. After column selection and method optimization is achieved, use the column selector to quickly validate methods using different lots of the same packing material or, alternatively, different columns from the same lot.

Many laboratories have a number of users sharing the same system. The column selector lets multiple users select methods using the correct column for their assay and offers convenient washout and column storage. Different samples can be run at night and over weekends using different methods, better utilizing existing equipment and increasing productivity.

The selected column is indicated by a bright digital display on the front panel. Select columns remotely using 4-line BCD electronic interface, or locally by push button.



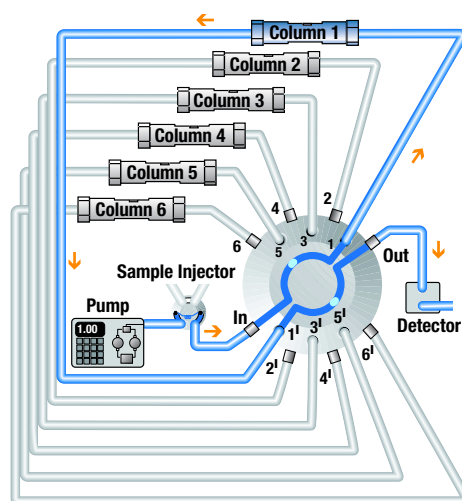
Column Selector

Column Selector with Cover

hplc accessories | valves

## Design Features:

- Pinch clips simplify column mounting and removal
- Built-in drip tray provides safe and convenient solvent containment for leaks and spills
- Magnetically secured cover maintains environmental isolation and stabilizes ambient temperature
- Side tubing fasteners organize tubing connections
- Accommodates columns in lengths of 3–35cm (2–14") and diameters of 0.6–3.2cm (0.25–1.25")



Column Selection

4536

SelectPRO™ Column Selector Specifications	
<b>Dimensions:</b>	22" H x 9.8" W x 12.8" D (55.9cm H x 24.9cm W x 32.5cm D)
<b>Maximum Pressure:</b>	5000psig (345 bar)
<b>Flow Passage:</b>	0.6mm (0.024") and 0.4mm (0.015")
<b>Environment:</b>	4–40°C, <95% humidity (non-condensing)
<b>Supplied with:</b>	10-32 nuts and ferrules, 3.5m x 1/16" o.d. PEEK tubing, universal power supply, power line cord, and interface cable
<b>Warranty:</b>	1 Year
<b>Control:</b>	4-Line BCD

## SelectPRO™ Column Selectors

Control Logic	Part No.
<i>Six-column Selectors</i>	
Stainless Steel	85503
PEEK	85507
<i>Three-column Selectors</i>	
Stainless Steel	85513
PEEK	85517

## SelectPRO™ Valve RheBuild® Kits

Description	Part No.
<i>Valve RheBuild® Kits</i>	
For Six-column Selectors	85509
For Three-column Selectors	85519