

Alltech® Alltima™ Introduction



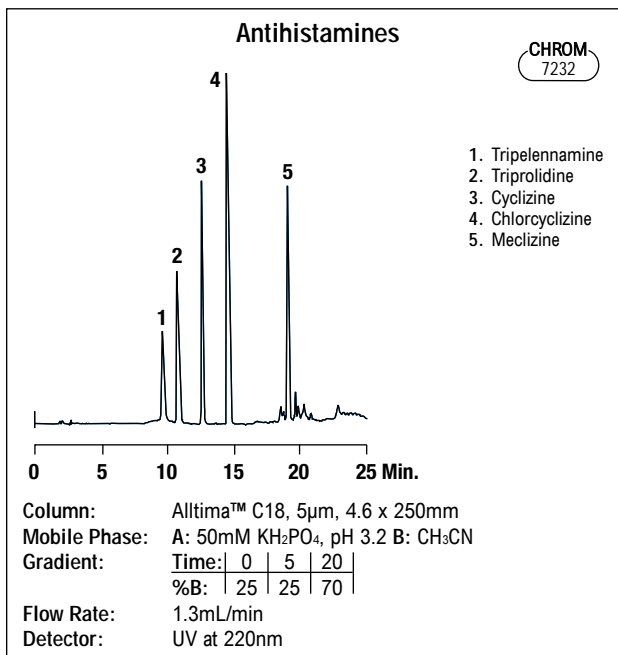
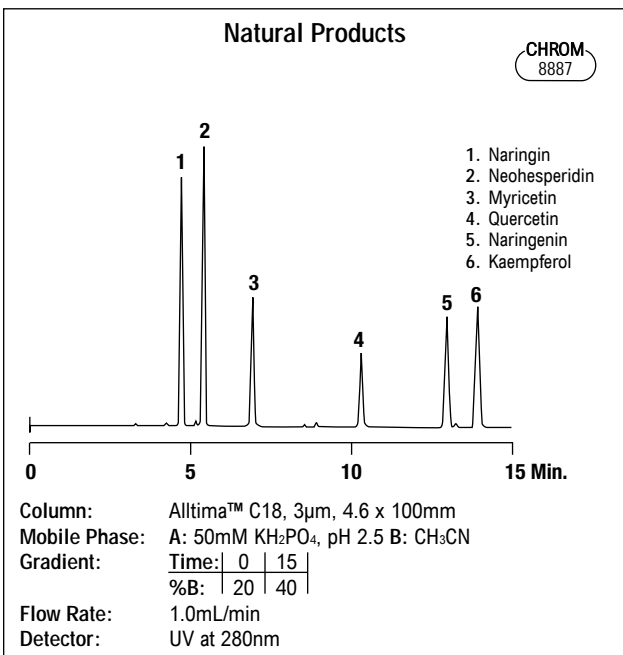
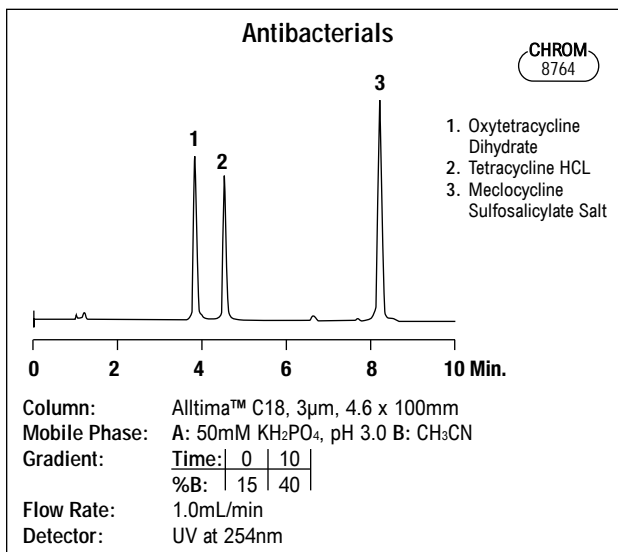
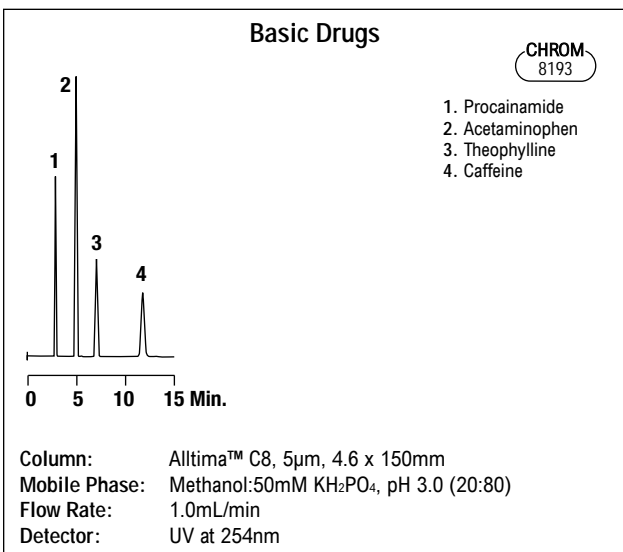
High-Quality General-Purpose HPLC Columns

- Extensive collection of published applications
- Well suited for microbore applications, stable in popular microbore mobile phases
- Acid and base deactivated symmetrical peaks
- Polymerically bonded and double-encapped for long column lifetimes
- Analyze acids, bases, and neutrals in one run
- Full range of column dimensions, from microbore to preparative

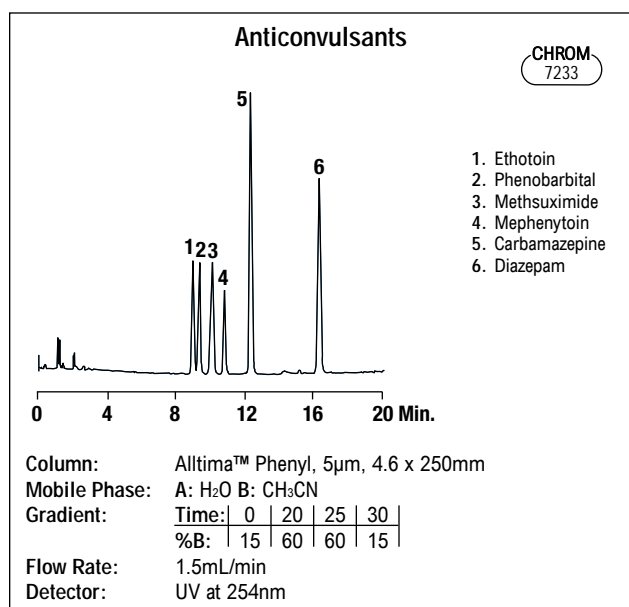
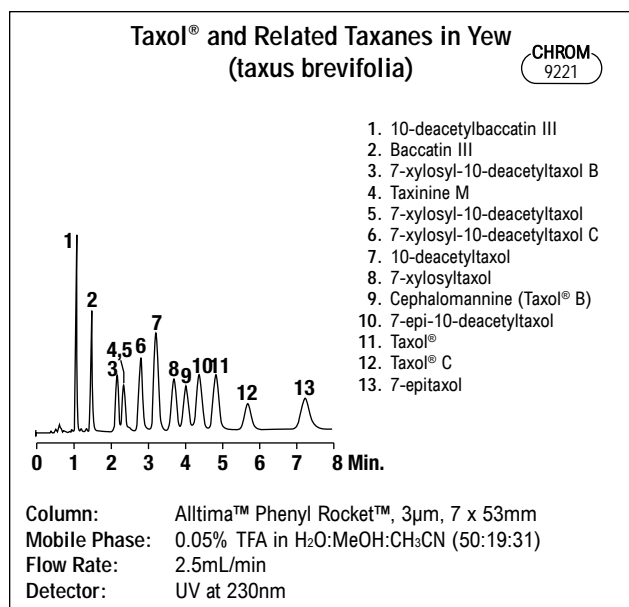


Alltima™ Phase Specifications

Phase	Base Material	Particle Shape	Particle Size	Pore Size	Surface Area	Carbon Load	Phase Type	Endcapped?	USP L-code
C18	Silica	Spherical	3, 5, 10µm	100Å	340m ² /g	16%	Polymeric	Yes	L1
C18 LL	Silica	Spherical	5µm	100Å	340m ² /g	9%	Polymeric	Yes	L1
C8	Silica	Spherical	3, 5, 10µm	100Å	340m ² /g	9%	Polymeric	Yes	L7
Phenyl	Silica	Spherical	3, 5µm	100Å	340m ² /g	7.5%	Polymeric	Yes	L11
Cyano	Silica	Spherical	3, 5µm	100Å	340m ² /g	—	Polymeric	Yes	L10
Amino (NH ₂)	Silica	Spherical	3, 5µm	100Å	340m ² /g	—	Polymeric	No	L8
Silica	Silica	Spherical	3, 5, 10µm	100Å	340m ² /g	—	—	—	L3



Alltech® Alltima™ Reversed-Phase Columns



Alltima™ All-Guard™ Cartridges*

Packing	i.d. x Length	Qty.	Part No.
C18, 5µm	2.1 x 7.5mm	3	96680
	3.0 x 7.5mm	3	96361
	4.6 x 7.5mm	3	96080
C18-LL, 5µm	2.1 x 7.5mm	3	96432
	3.0 x 7.5mm	3	96433
	4.6 x 7.5mm	3	96285
C8, 5µm	2.1 x 7.5mm	3	96441
	3.0 x 7.5mm	3	96362
	4.6 x 7.5mm	3	96081
Phenyl, 5µm	2.1 x 7.5mm	3	96442
	3.0 x 7.5mm	3	96445
	4.6 x 7.5mm	3	96082
All-Guard™ Cartridge Holder (Includes Direct-Connect Column Coupler)		ea	80101

*All-Guard™ holder required. Other particle sizes available.

Alltima™ HPLC Reversed-Phase Columns

Packing	Format	i.d. x Length	Standard Part No.	Waters® Fittings Part No.	
C18, 3µm	Microbore	1.0 x 100mm	43853	—	
	Microbore	1.0 x 150mm	43864	—	
	Expedité™ MS	2.1 x 10mm	43836	—	
	Expedité™ MS	2.1 x 20mm	43803	—	
	Microbore	2.1 x 50mm	43849	—	
	Microbore	2.1 x 100mm	43821	—	
	Microbore	2.1 x 150mm	43852	—	
	Solvent Reducer	3.0 x 150mm	81143	—	
	Expedité™ MS	4.6 x 10mm	43837	—	
	Expedité™ MS	4.6 x 20mm	43851	—	
	Analytical	4.6 x 50mm	81412	—	
	Analytical	4.6 x 100mm	81382	81383	
	Analytical	4.6 x 150mm	81387	81388	
	Rocket™	7 x 33mm	50603	—	
Rocket™	7 x 53mm	50605	—		
C18, 5µm	Microbore	1.0 x 150mm	88384	—	
	Microbore	1.0 x 250mm	88385	—	
	Microbore	2.1 x 150mm	88370	—	
	Microbore	2.1 x 250mm	88371	—	
	Solvent Reducer	3.0 x 150mm	81140	—	
	Solvent Reducer	3.0 x 250mm	81142	—	
	Analytical	4.6 x 150mm	88052	88053	
	Analytical	4.6 x 250mm	88056	88057	
	C18, 10µm	Analytical	4.6 x 250mm	88307	88308
	C18-LL, 5µm	Microbore	1.0 x 150mm	88390	—
Microbore		1.0 x 250mm	88391	—	
Microbore		2.1 x 150mm	88388	—	
Microbore		2.1 x 250mm	88389	—	
Solvent Reducer		3.0 x 150mm	81144	—	
Solvent Reducer		3.0 x 250mm	81145	—	
Analytical		4.6 x 150mm	88069	88082	
Analytical		4.6 x 250mm	88099	88235	
C8, 3µm		Analytical	4.6 x 50mm	81413	—
		Analytical	4.6 x 100mm	81392	81393
	Analytical	4.6 x 150mm	81397	81398	
	Rocket™	7 x 33mm	50607	—	
	Rocket™	7 x 53mm	50609	—	
C8, 5µm	Microbore	1.0 x 150mm	88394	—	
	Microbore	1.0 x 250mm	88395	—	
	Microbore	2.1 x 150mm	88372	—	
	Microbore	2.1 x 250mm	88373	—	
	Solvent Reducer	3.0 x 150mm	81146	—	
	Analytical	4.6 x 150mm	88072	88073	
C8, 10µm	Analytical	4.6 x 250mm	88317	88318	
	Phenyl, 3µm	Microbore	1.0 x 100mm	43892	—
Phenyl, 5µm	Microbore	1.0 x 150mm	43854	—	
	Expedité™ MS	2.1 x 10mm	43809	—	
	Expedité™ MS	2.1 x 20mm	43865	—	
	Microbore	2.1 x 50mm	43835	—	
	Microbore	2.1 x 100mm	43866	—	
	Microbore	2.1 x 150mm	43813	—	
	Expedité™ MS	4.6 x 10mm	43883	—	
	Expedité™ MS	4.6 x 20mm	43822	—	
	Analytical	4.6 x 50mm	81178	—	
	Analytical	4.6 x 100mm	81181	88184	
Analytical	4.6 x 150mm	81188	81191		
Phenyl, 5µm	Solvent Reducer	3.0 x 150mm	81147	—	
	Analytical	4.6 x 150mm	88087	88088	
	Analytical	4.6 x 250mm	88092	88093	

hplc columns | small molecule

Alltech® Alltima™ C18 Validation Kits

Alltima™ columns have the batch-to-batch and column-to-column reproducibility required for method development. Each kit includes three columns made from three different batches of Alltima™ C18.

Alltima™ C18 Validation Kits

Description	Includes:	i.d. x Length	Part No.
C18, 3µm	3 columns from 3 different batches	4.6 x 100mm	11350
C18, 5µm	3 columns from 3 different batches	4.6 x 150mm	11541
C18, 5µm	3 columns from 3 different batches	4.6 x 250mm	11543

Alltech® Alltima™ Normal-Phase Columns

Alltima™ HPLC Normal-Phase Columns

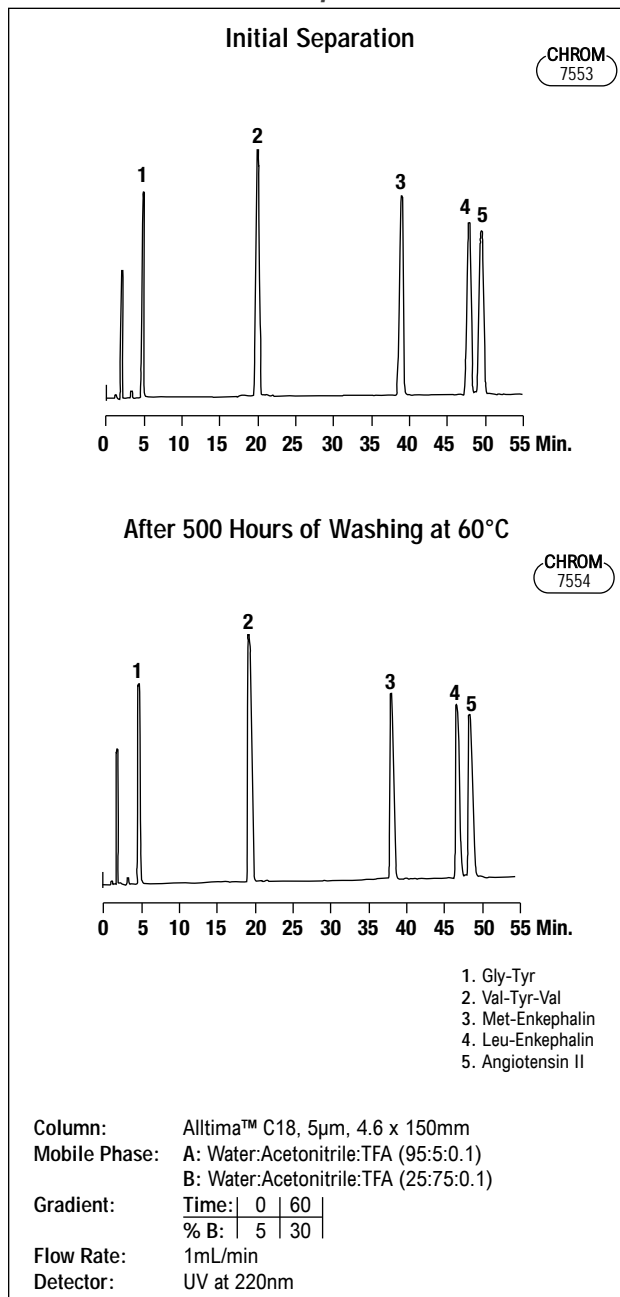
Packing	Format	i.d. x Length	Standard Part No.	Waters® Fittings Part No.
Cyano, 3µm	Analytical	4.6 x 50mm	81179	—
	Analytical	4.6 x 100mm	81182	81186
	Analytical	4.6 x 150mm	81189	81192
Cyano, 5µm	Analytical	4.6 x 150mm	88180	88182
	Analytical	4.6 x 250mm	88189	88191
Amino, 3µm	Analytical	4.6 x 50mm	81180	—
	Analytical	4.6 x 100mm	81183	81187
	Analytical	4.6 x 150mm	81190	81193
Amino, 5µm	Analytical	4.6 x 150mm	88205	88207
	Analytical	4.6 x 250mm	88217	88218
Silica, 3µm	Microbore	1.0 x 100mm	43824	—
	Microbore	1.0 x 150mm	43855	—
	Expedite™ MS	2.1 x 10mm	43891	—
	Expedite™ MS	2.1 x 20mm	43801	—
	Microbore	2.1 x 50mm	43876	—
	Microbore	2.1 x 100mm	43823	—
	Microbore	2.1 x 150mm	43884	—
	Expedite™ MS	4.6 x 10mm	43889	—
	Expedite™ MS	4.6 x 20mm	43886	—
	Analytical	4.6 x 50mm	81414	—
Silica, 5µm	Analytical	4.6 x 100mm	81404	81405
	Analytical	4.6 x 150mm	81409	81410
	Analytical	4.6 x 250mm	88123	88124
Silica, 10µm	Analytical	4.6 x 150mm	88171	88172
	Analytical	4.6 x 250mm	88327	88328

Alltima™ All-Guard™ Cartridges*

Packing	i.d. x Length	Qty.	Part No.
Cyano, 5µm	4.6 x 7.5mm	3	96084
Amino, 5µm	4.6 x 7.5mm	3	96085
Silica, 5µm	2.1 x 7.5mm	3	96450
	4.6 x 7.5mm	3	96083
All-Guard™ Cartridge Holder (Includes Direct-Connect Column Coupler)		ea	80101

*All-Guard™ holder required. Other particle sizes available.

Alltima™ is Stable and Reproducible



Column capacity and selectivity remained constant after washing an Alltima™ C18 column for 500 hours with 0.5% TFA:Acetonitrile (50:50) at 60°C.

tech tip

Want high throughput on a conventional (non-ultra high-pressure) system?

Choose the Rocket™ column format—no modifications necessary to your existing HPLC system. Choose Expedite™ columns for low volume and microbore systems. See page 31 for more explanation of the Rocket™ and Expedite™ formats.